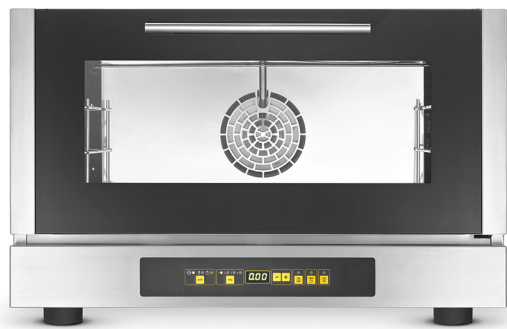
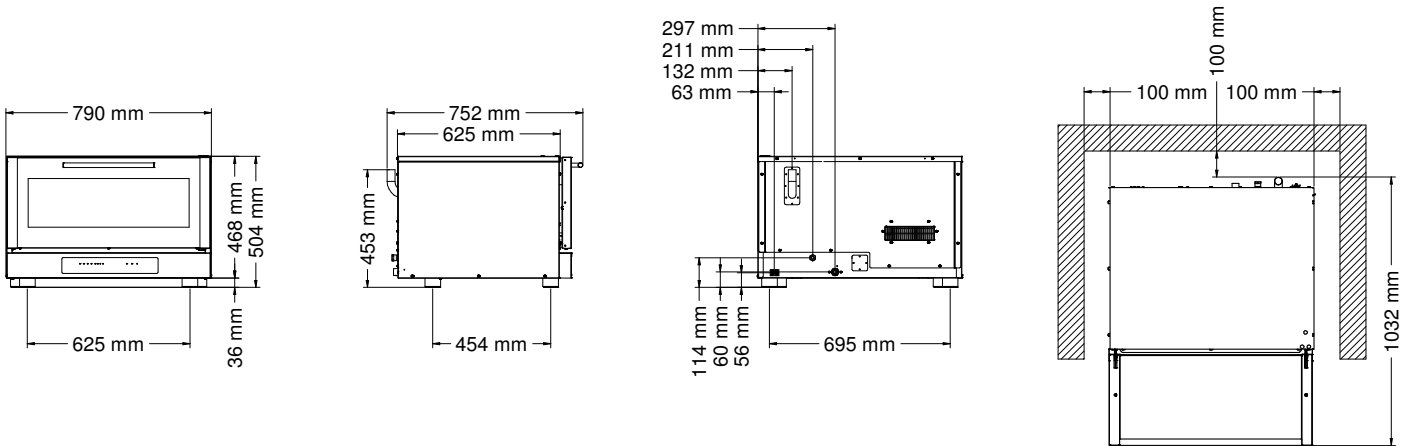


CHF 364 D UD



ELECTRIC COMBI OVEN WITH DIGITAL CONTROL

Designed for small food outlets who want to heat frozen bread or bake sweet snacks and Danish pastries using a product that packs innovative features into a compact design. The digital display with storage for 99 programs and 4 cooking options gives you the utmost freedom when it comes to managing your preparations. The programmable delayed start feature means you can decide beforehand what time you want to bake your dishes, further customizing the cooking process with the direct steam option.



DIMENSIONAL FEATURES			
Dimensions (WxDxH mm)	790	752	504
Weight (kg)		44	
Distance between rack rails (mm)		73	

ELECTRICAL FEATURES	
Power supply (kW)	3,7
Frequency (Hz)	50/60
Voltage (Volt)	AC 220/230
N° of motors	1 Bidirectional
Boiler	/
Protection against water	IPX3

PLUS	
Stainless steel cooking chamber	
Door of the oven with inspectionable glass	
Quick fastening of lateral supports	
Embedded gasket	
Stackable	
Forced cooling system of inner parts	
IPX 3	
Manual washing set up	
New design of cooking chamber	
CB certification	
New design of handle	

FUNCTIONAL FEATURES	
Power	Electricity
Capacity	N° 3 trays/grids (600x400 mm)
Type of cooking	Ventilated
Steam	Direct steam controlled by digital panel (10 levels)
Cooking chamber	AISI 304 Stainless steel
Water drain	/
Temperature	30 ÷ 260°C
Temperature control	Digital probe thermometer
Control panel	Digital – Lower side
N° of programs	99
Programmable cooking steps	4
Pre-heating temperature	180°C
Pre-heating function	Available only in "Program Mode"
Door	Tilt door Ventilated Inspectionable glass
Modularity	Available

EQUIPMENT			
Cardboard box dimensions (WxDxH mm)	805	830	670
Lateral supports	1 right + 1 left		
Cable	Single-Phase [3G 1,5] - L=1600 mm		